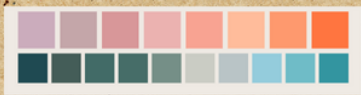




# RE/MAX GOLDEN APPLE

## COMING SOON!

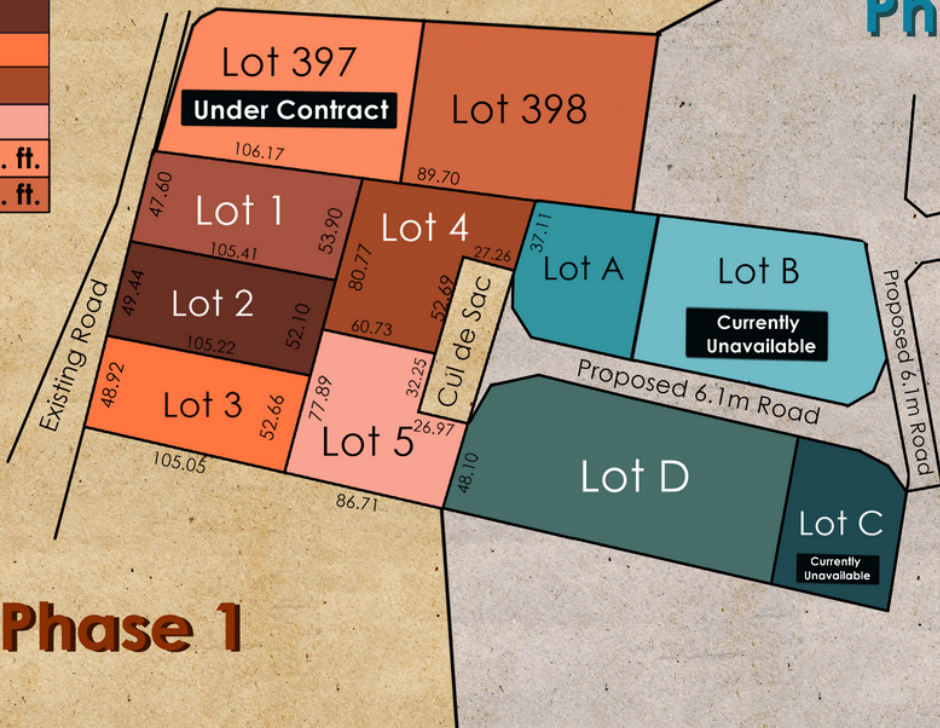


PHASE 1+2  
Upcoming Lots for Sale  
Located in Belle Vue, Gros-Islet  
Just South of Cap Estate

Phase 1

Lot 1 - 5,335 sq. ft.
Lot 2 - 5,335 sq. ft.
Lot 3 - 5,337 sq. ft.
Lot 4 - 6,048 sq. ft.
Lot 5 - 6,047 sq. ft.
Lot 397 - 10,946 sq. ft.
Lot 398 - 10,919 sq. ft.

Phase 2 (TBA)



Phase 2 (TBA)

Lot A - 5,000 sq.ft.
Lot B - 10,000 sq.ft.
Lot C - 5,000 sq.ft.
Lot D - 14,207 sq.ft.



Phase 1

### PHASE 1 EXCLUSIVE FROM RE/MAX GOLDEN APPLE

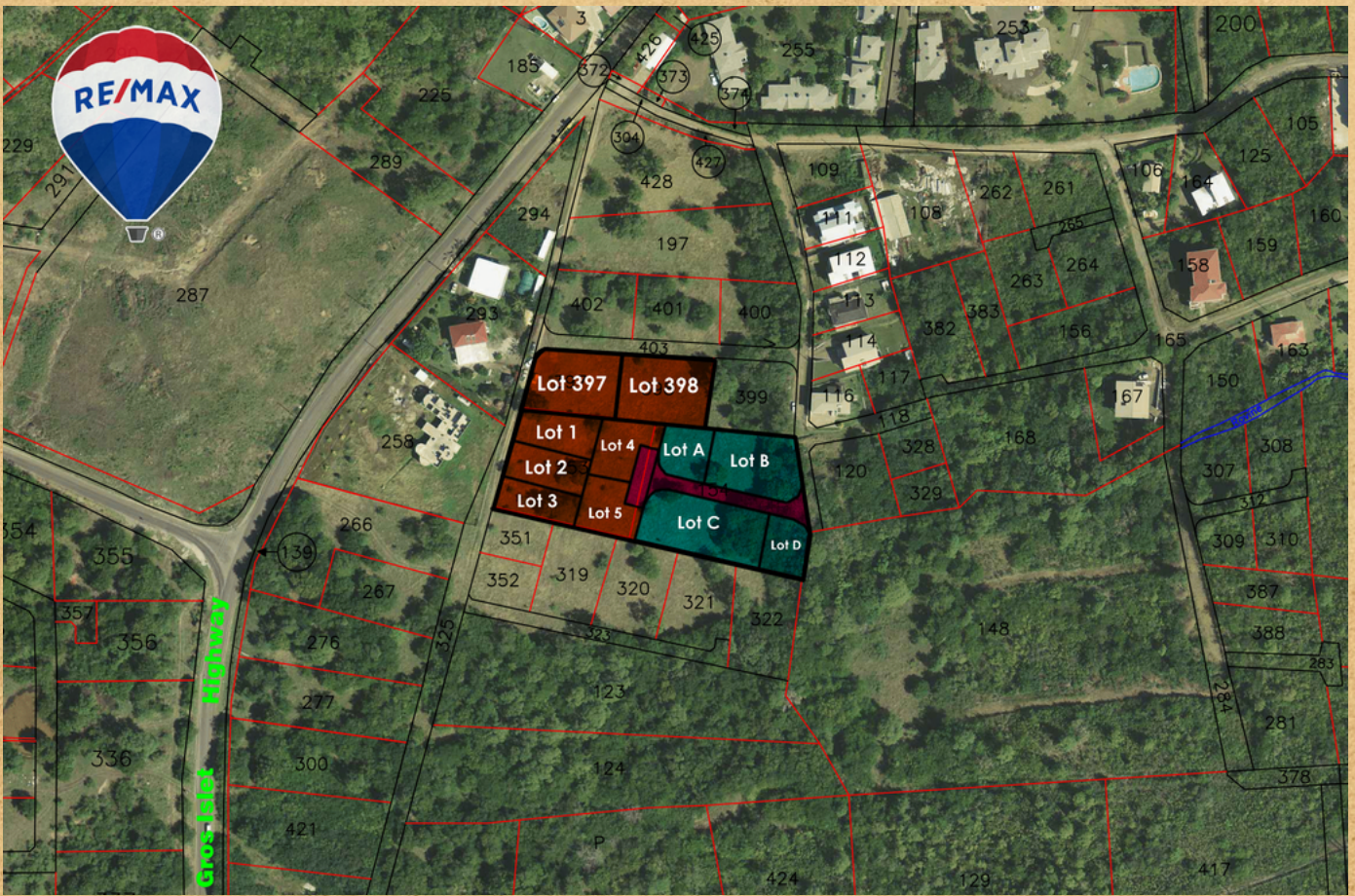
### BELLE VUE RESIDENTIAL DEVELOPMENT

### AWAITING DCA APPROVAL.

### LOTS RANGING FROM 5,000-14,000 SQ FT.

### LOTS 1,2,3, 397 & 398 CURRENTLY HAVE ROAD ACCESS





INTRODUCING OUR UPCOMING DEVELOPMENT, STRATEGICALLY LOCATED IN BELLE VUE, GROS-ISLET, JUST SOUTH OF CAP ESTATE. THIS PRIME REAL ESTATE OFFERS A SELECTION OF LOTS IN PHASE 1 AND THE SOON-TO-BE-ANNOUNCED PHASE 2.

EACH LOT IS METICULOUSLY PLANNED TO ENSURE AMPLE SPACE AND PRIVACY FOR POTENTIAL LANDOWNERS. THIS IS AN INVESTMENT OPPORTUNITY YOU WON'T WANT TO MISS.

HERE ARE THE KEY DETAILS:

LOCATION: BELLE VUE, GROS-ISLET, JUST SOUTH OF CAP ESTATE.

PHASES:

**PHASE 1:**

LOTS NUMBERED FROM 1 TO 5, PLUS LOT 397 AND LOT 398.

LOT SIZES: RANGING FROM 5,335 SQ.FT. TO 10,946 SQ.FT.

**PHASE 2 (TBA):**

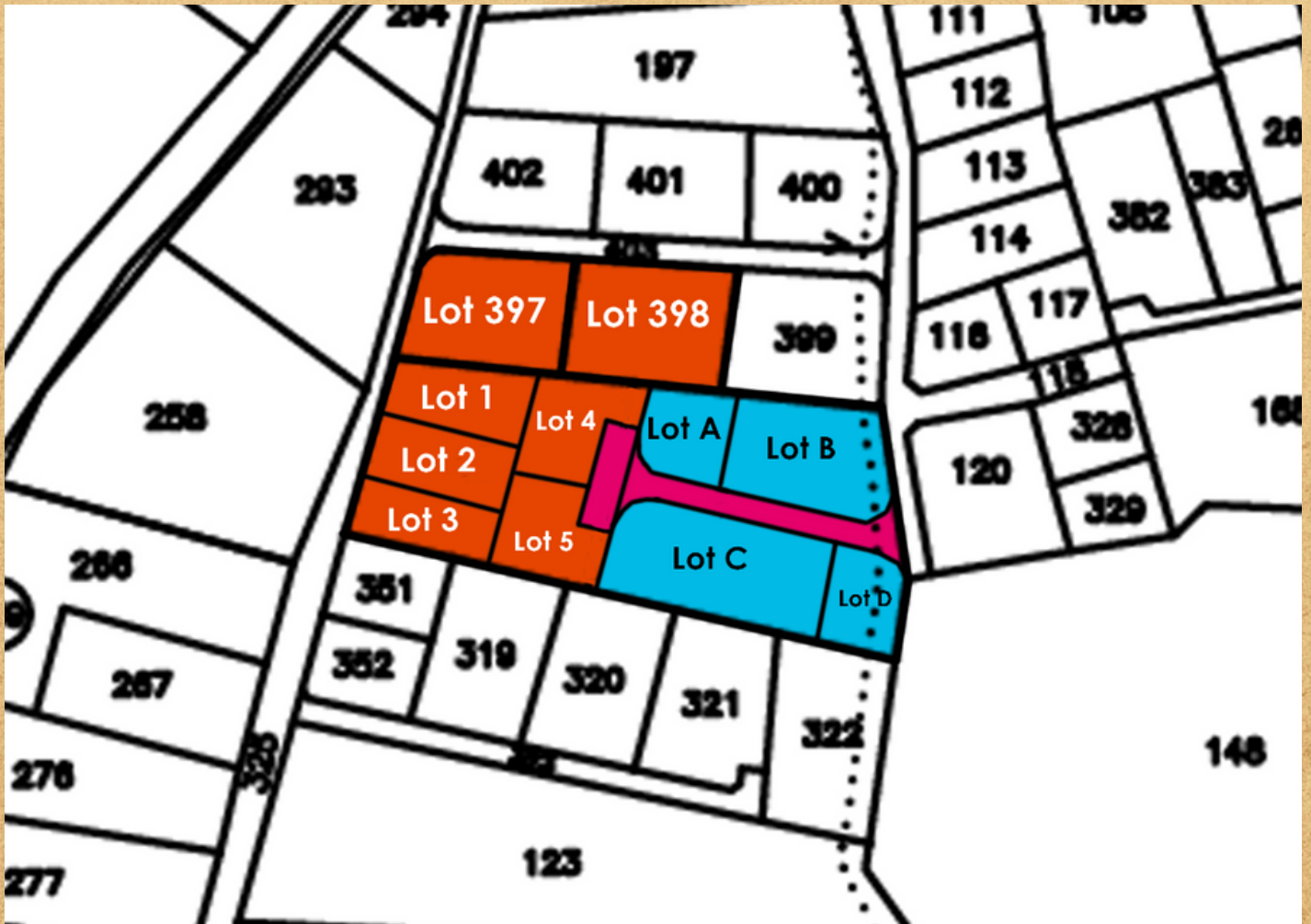
LOTS A, B, C, AND D.

LOT SIZES: RANGING FROM 5,000-14,207 SQ FT. (SUBJECT TO CHANGE)

**NOTE:** LOTS B AND C ARE CURRENTLY UNAVAILABLE. WHIST LOT 397 IS CURRENTLY UNDER CONTRACT

DON'T MISS OUT ON THIS OPPORTUNITY TO OWN A PIECE OF PARADISE! 🌴🏠





Lot	Size	Price (XCD)
1	5,335 sq. ft.	\$157,000
2	5,335 sq. ft.	\$156,000
3	5,337 sq. ft.	\$155,500
4	6,048 sq. ft.	\$176,000
5	6,047 sq. ft.	\$175,000
397	10,946 sq. ft.	Under Offer
398	10,919 sq. ft.	\$305,732





## **BUYING PROCESS**

**[CALL](#) OR [VISIT OUR OFFICE IN RODNEY BAY](#)**

LOCATED NEAR THE RUBIS GAS STATION.

FILL OUT OUR APPLICATION FORM. THE APPLICATION APPROVAL SHOULD TAKE ABOUT A WEEK.

ONCE YOUR APPLICATION HAS BEEN APPROVED, THE LOT OF YOUR CHOICE CAN BE RESERVED BY PLACING A 5% DEPOSIT TOWARDS THE PURCHASE AND SIGNING THE RESERVATION AGREEMENT AT THE RE/MAX GOLDEN APPLE OFFICE.

THE RESERVATION AGREEMENT HOLDS THE PROPERTY FOR 3 MONTHS WHICH IS THE TIME EXPECTED FOR THE SELLERS TO RECEIVE THE BLOCK AND PARCEL NUMBERS FOR THE LOTS FROM THE LAND REGISTRY.

UPON NOTIFICATION OF THE RECEIPT OF THE LAND REGISTER OF YOUR REQUESTED PARCEL YOU WILL HAVE 1 MONTH TO EXECUTE AN AGREEMENT FOR SALE AND PLACE ANOTHER 5% DEPOSIT, TOTALING 10% AND THEN THE PROCESS CONTINUES AS THE TYPICAL PROPERTY BUYING PROCESS IN ST. LUCIA.

PLEASE NOTE THAT THE INITIAL 5% DEPOSIT IS 60% REFUNDABLE SHOULD YOU WISH BUT IT IS 100% TRANSFERABLE TO YOUR NOMINEE, PROVIDED THEY PASS THE APPLICATION PROCESS.

**PLEASE NOTE THAT THE INITIAL 5% DEPOSIT IS 60% REFUNDABLE BUT IT IS 100% TRANSFERABLE**



